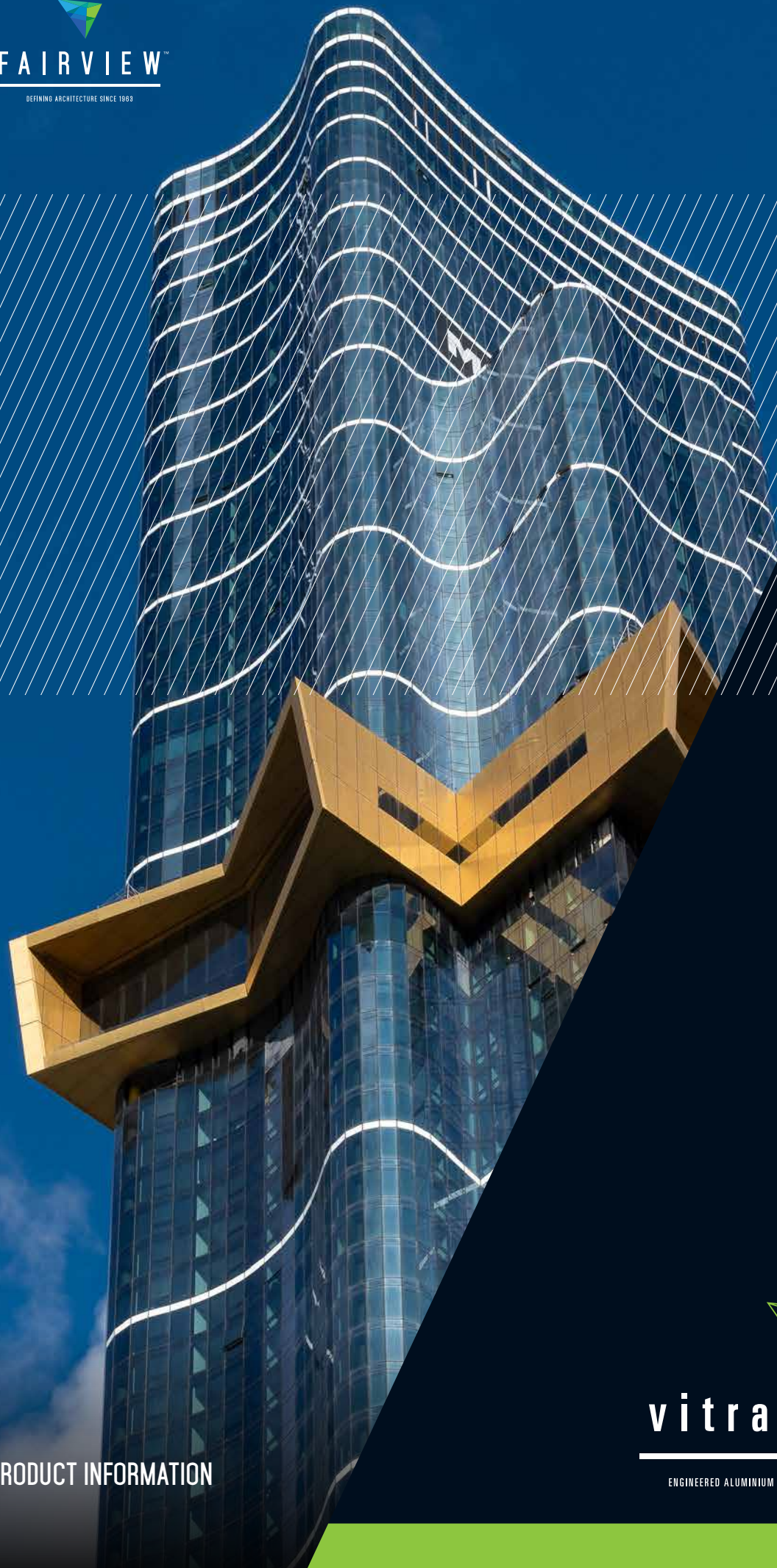




FAIRVIEW™

DEFINING ARCHITECTURE SINCE 1993



vitracore G2®

ENGINEERED ALUMINIUM PANEL / MANUFACTURED BY FAIRVIEW

PRODUCT INFORMATION



ABOUT VITRACORE G2

Vitracore G2 is an engineered aluminium panel designed for high performance as a façade material, that is half the weight, 5x more rigid and has 70% greater resistance to oil canning than its solid panel counterparts. It's offered as a fully integrated cladding system that has been rigorously tested and is CodeMark Certified to the Building Code of Australia (BCA) 2022 standards.

Vitracore G2 is the ideal façade product for all types of construction from residential developments to large-scale government infrastructure projects. The lightweight nature of the panels aid the installation procedure and efficacy, reducing overall construction cost.

Providing an almost unlimited range of colours and finishes, Vitracore G2 is the ideal solution to high demand industry requirements for innovative and functional façade demands. With sustainability at the forefront of building design, Vitracore G2 offers transparent environmental impact information as reported in an independently verified Environmental Product Declaration (EPD), produced by Global GreenTag. At the end of its life on a building, Vitracore G2 panels can be recycled and repurposed into other products, contributing to the circular economy.

KEY FEATURES

The outstanding performance of Vitracore G2 is made possible by a range of significant components that make this product ideal for application in Type A, B, and C buildings where non-combustible materials are required.

Vitracore G2 was the first engineered aluminium panel to be awarded the status 'deemed non-combustible' under the National Construction Code (NCC) part C2D10(6)(g) and is fully tested as required to AS1530.1 and AS1530.3.

Material	Engineered aluminium panel.
Finish	The highly recognised PVDF or FEVE Paint System known for its high durability, providing the optimum resistance to weather and industrial pollution.
Fixing System	A cassette style concealed fixing system which is the same to fabricate and install as traditional ACPs.
Application	Type A, B, and C constructions where non-combustible materials are required such as mixed-use developments, residential construction and large-scale government infrastructure projects, like hospitals.
Warranty	15-year warranty, subject to standard terms and conditions.





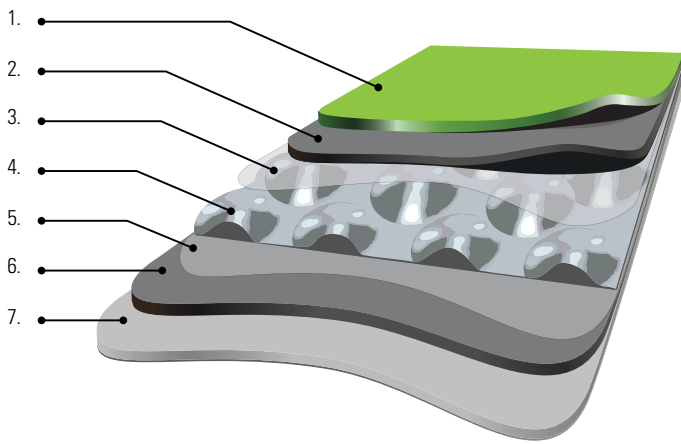
PANEL SPECIFICATION

The typical composition of Vitracore G2 consists of seven elements, each complying with non-combustibility requirements as specified in the NCC. The overall thickness of each panel is 4mm with a weight of 4.6kg/ m², compared to the average weight of a solid aluminium panel which is 8.1kg/m2, making Vitracore G2 panels easier and faster to install, especially useful on large infrastructure projects.

Available in a range of sizes to suit various requirements, we also offer custom sizing where required.

TYPICAL COMPOSITION

- 1. PVDF Coloured Coating
- 2. 0.7mm Aluminium Skin
- 3. 0.08mm Adhesive
- 4. 3mm Profiled Aluminium Core
- 5. 0.08mm Adhesive
- 6. 0.5mm Aluminium Skin
- 7. Polyester Anti-corrosion Coating



Dimensions	Thickness: 4mm Weight: 4.6kg/m²
Aluminium Skins	Surface material both sides: Aluminium sheets of a minimum 3000 series. <ul style="list-style-type: none"><li>• Face skin: 0.7mm</li><li>• Rear skin: 0.5mm</li></ul>
Core Material	The core is profiled 0.3mm aluminium core, expanded to 2.8mm.



PANEL SIZES

Width (mm)	Length (mm)
1250/1500	2500
	3200
	4000

Custom sizes are available, please speak to the Fairview team

MATERIAL DATA

Classification	Test Standard	Unit	Result
Temperature Limit		°C	-50 ± 80
Core Shear Properties	ASTM C393/393-11	MPa	Core shear ultimate strength: 0.91 Facing Stress: 130.7
Tensile Properties of Facing Aluminium Panel	ASTM E8/E8M15a	MPa	Tensile Strength: 172.9 MPa Elongation: 8.4%
Tensile Strength	ASTM C297/C297M15	MPa	0.81
Facing Peel Torque	ASTM D1781-98 (2012)	mm N/mm2	270
Thermal Resistance	ASTM C318-10	m2K/W	0.005
Acoustic Resistance	ISO 717-1	dB	Rw (C, Ctr) = 22 (-1,-2)





## FINISH

Vitracore G2 uses only the highly recognised PVDF or FEVE paints known for their excellent durability. These premium paints provide the ultimate resistance to weather and industrial pollution. Vitracore G2 has an unlimited colour range, as we can match almost any finish and colour required.

Vitracore G2 panels also come in a range of anodised finishes, offering both standard and customised colours and textures, including:

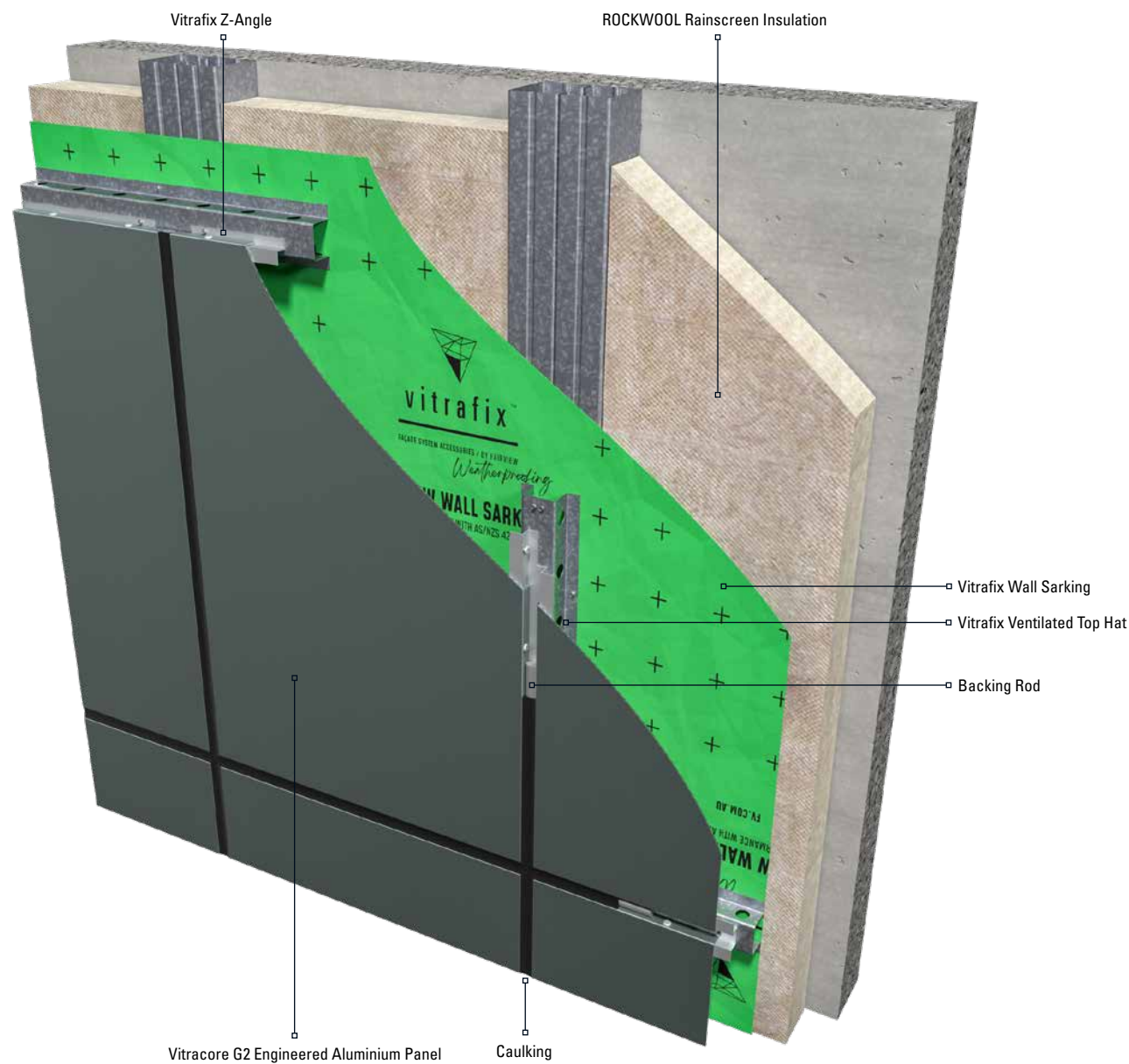
- SOLID COLOURS
- METALLIC
- WOODCREATE
- NATURALINE
- SPARKLING
- CHROMATIC





## VITRACORE G2 ENGINEERED ALUMINIUM FACADE SYSTEM

Vitracore G2 is offered as a fully integrated facade system that has been rigorously tested and is CodeMark certified as a tested system. Fairview offers a comprehensive range of sub-framing components available through the Vitrafix range, designed to seamlessly integrate with the Vitracore G2 cladding system, ensuring full compliance with building codes. These sub-framing components are engineered to support the structural integrity of the cladding while providing a reliable foundation that enhances the overall performance of the system.

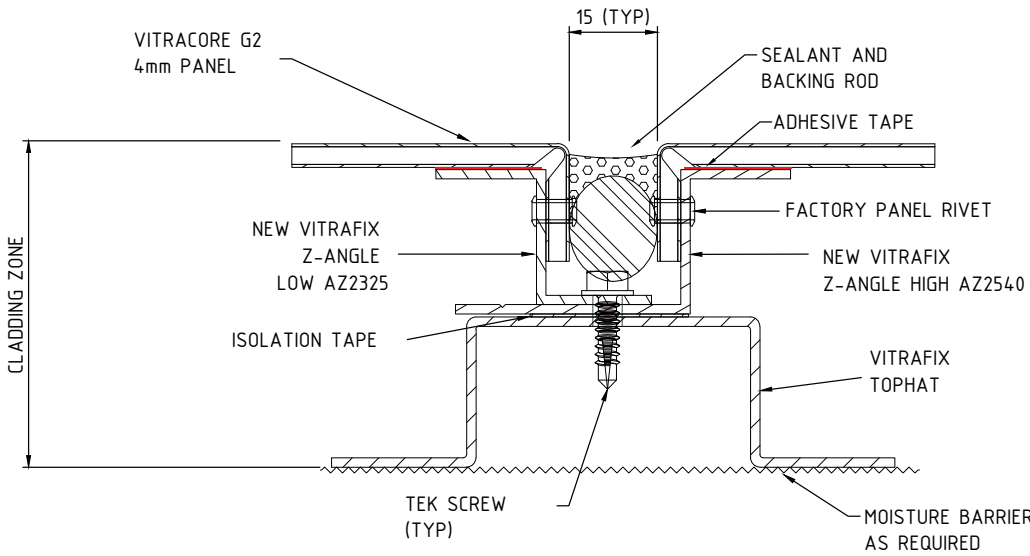


Please refer to the Vitrafix Wall Systems brochure for the full component list for the Vitracore G2 system.





FIXING SYSTEM



This is a concept drawing only, please refer to the Vitracore G2 Technical Information.

WARRANTY

Vitracore G2 is an incredibly durable material when used in the right application.

Vitracore G2 includes a 15-year warranty, subject to standard terms and conditions.

DISCLAIMER

While the information provided relating to Fairview products is true to the tests and measures available to us, the information provided in this brochure is general in nature only and does not constitute project-specific building, construction or fire-safety advice. Before acting on any information in this document, you should consider the appropriateness of the information in regard to your project parameters and requirements. Fairview products are deemed suitable or compliant after approval from building and construction professionals associated with specific projects and developments. If you'd like some further insight about this topic, contact Fairview on 1800 007 175 or email [helpdesk@fv.com.au](mailto:helpdesk@fv.com.au). We're here to see how we can help.



AUSTRALIA  
NEW ZEALAND  
UNITED KINGDOM

SALES ENQUIRIES 1800 007 175

HELPDESK@FV.COM.AU

[FV.COM.AU](https://fv.com.au)

VITRACORE G2 / FEBRUARY 2024