



FAIRVIEW™

DEFINING ARCHITECTURE SINCE 1969



vitaloc™

ROLL-FORMED STEEL CLADDING / MANUFACTURED BY FAIRVIEW

PRODUCT INFORMATION



vitraloc[™]

ROLL-FORMED STEEL CLADDING / MANUFACTURED BY FAIRVIEW

ABOUT VITRALOC

Vitaloc architectural steel cladding makes a visually striking and sophisticated design statement with its distinctive tall sharp ribs and flat smooth pan profiles for that bold and modern architectural look.

Made from non-combustible roll-formed steel, Vitaloc provides peace of mind and freedom of expression with an extensive pallet of colour and textures.

Vitaloc is part of Fairview's extensive architectural product range and shares a unique DNA with the distinctive Stryüm aluminium linear wall cladding system.

Vitaloc is suitable for both vertical and horizontal applications and is available in two modern profiles – 38mm Seam direct-fix and 25mm Shadow interlocking panels.

Fairview has made product selection simple by offering an extensive range of standardised flashings and two profiles options in the 38mm Seam panel with a 265mm cover and 25mm Shadow interlocking panels with a 285mm (plus 15mm express joint) cover. The pan width of the two profiles reflects optimum performance and aesthetic proportions. Custom widths are also available on request.

Leaving little to chance, Vitaloc cladding with its accompanying flashings and accessories forms part of an engineered and tested system.

2.2 KEY FEATURES

PRODUCT	VITRALOC
Product DNA	Roll-formed Steel.
Finish	Continuous Coil Coated.
Fixing system	Roll-formed interlocking panels taking advantage of a fully detailed system and thermally managed substructure.
Application	Type A, B and C construction where non-combustible materials are required such as mixed use developments, residential construction and large-scale government infrastructure projects.
Warranty	15 year standard warranty, subject to terms and conditions.

PANEL INFORMATION

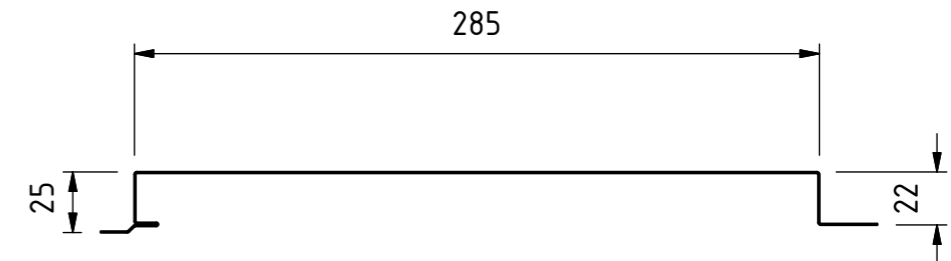
Vitraloc cladding is manufactured from G300 colour coated steel, aluminium/zinc/magnesium or zinc-aluminium alloy coated steel. Products conform to the following Australian standards that are called up in the National Construction Code (NCC).

- Steel material
- All metallic coated steel complies with AS 1397
- Painted steel product conforms with AS 2728

PROFILES

SHADOW

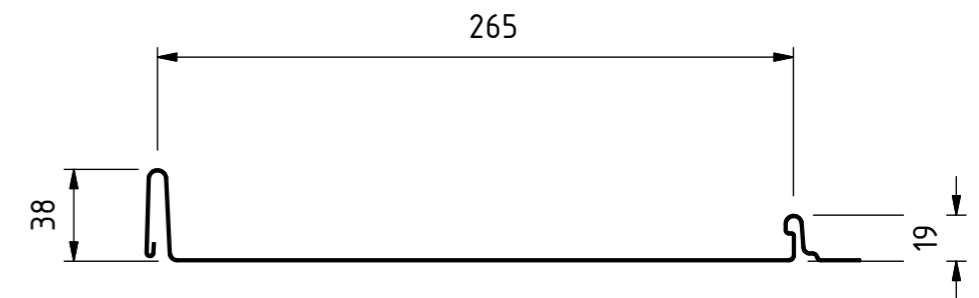
SHADOW 25



Depth: 25mm	Weight: 1.08kg/lm	Length: Min: 300mm – Max: 8000mm	Effective cover: 300mm
-------------	-------------------	----------------------------------	------------------------

SEAM

SEAM 38



Depth: 38mm	Weight: 1.08kg/lm	Length: Min: 300mm – Max: 8000mm	Effective cover: 265mm
-------------	-------------------	----------------------------------	------------------------

CUSTOM SIZES AND PROFILES AVAILABLE, PLEASE CONSULT YOUR FAIRVIEW REPRESENTATIVE.



FINISHES

The Vitraloc architectural range of steel cladding profiles are available in an extensive range of classic and contemporary colours, textures, and finishes.

C-MAX™ - COLOUR COATED STEEL AND METALLIC COATED STEEL COIL - SADP/PVDF/FEA

SUBSTRATE

- Hot-dipped Aluminium/Zinc alloy coated steel coil
- Alloy coating weight 150gms/m²
- Manufactured to AS 1397:2021

SURFACE COATINGS

SADP - SUPER ADVANCED DURABLE POLYESTER COATING SYSTEM

- Nominal film Thickness 18µm ± 2µm. 25% Gloss
- Independently laboratory tested to the requirements of AS/NZS 2728:2013
- Suitable for ISO 9223:2012 and Atmospheric Classifications C1-C3

PVDF – CHEMICALLY RESISTANT 70% POLYVINYLIDENE FLUORIDE COATING

- Nominal film Thickness 20µm ± 2µm.
- Independently laboratory tested to the requirements of AS/NZS 2728:2013
- Suitable for ISO 9223:2012 and Atmospheric Classifications C1-C3

FEA - FLEXIBLE EXTERIOR ACRYLIC

- Nominal film Thickness 18µm ± 2µm. 25% Gloss
- Independently laboratory tested to the requirements of AS/NZS 2728:2013
- Suitable for ISO 9223:2012 and Atmospheric Classifications C1-C3

C-TEX™ — PREMIUM PATTERNED STEEL

PATTERNED PREMIUM METALLICS AND WOODGRAINS

SUBSTRATE

- Hot-dipped Aluminium/Zinc/Magnesium alloy coated steel coil
- Manufactured to AS 1397:2021

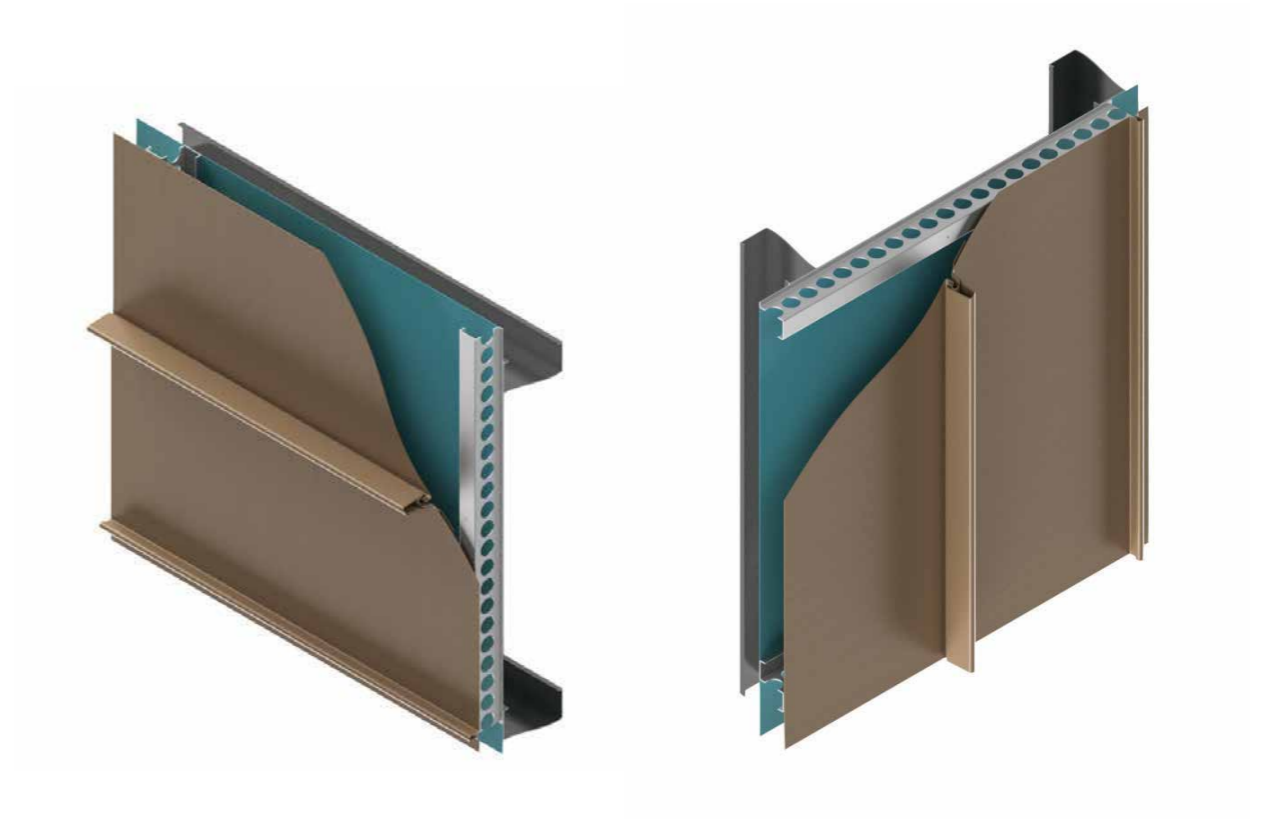
SURFACE COATING

- Advanced organic UV durable Polyvinylidene Fluoride (PVDF).
- Nominal film thickness coating system $35\mu\text{m} \pm 8\mu\text{m}$.
- Independently laboratory tested to the requirements of AS/NZS 2728:2021
- Suitable for ISO 9223:2012 and Atmospheric Classifications C1-C3

INSTALLATION OVERVIEW

Vitaloc wall cladding forms part of an engineered and tested assembly tested to AS/NZS 4284: Testing of Building Facades and includes proprietary components specifically developed to improve performance and enhance appearance through:

- Moisture management
- Thermal/Heat management
- Movement management



WARRANTY

Vitaloc is an incredibly durable material when used in the right application. Please contact your Fairview representative for full terms and conditions.

IMPORTANT WARRANTY INFORMATION

Maintaining your Vitaloc finish is an important component to upholding your warranty. Cleaning frequencies are based on your project location and provided in the warranty. Therefore you should document each time your Vitaloc panels are cleaned.

Recommended cleaning agents:

- Mineral spirits
- Organic cleaners
- PH-Neutral Solvents

DISCLAIMER

While the information provided relating to Fairview products is true to the tests and measures available to us, the information provided in this article is general in nature only and does not constitute project-specific building, construction or fire-safety advice. Before acting on any information on this document, you should consider the appropriateness of the information having regard to your project parameters and requirements. Fairview products are deemed suitable or compliant after approval from building and construction professionals associated with specific projects and developments. If you'd like some further insight about this topic, contact Fairview on 1800 007 175 or email helpdesk@fv.com.au. We're here to see how we can help.

FOR MORE INFORMATION

For more information and to order online samples about the Vitaloc system - visit our website www.fv.com.au or call 1800 007 175.

You'll find resources detailing:

- All architectural details
- Finishing options and colour swatches
- Vitaloc technical data
- Vitaloc maintenance info
- Warranty information
- Contact information

All colours represented in all imagery have been reproduced as a guide only. For precise colour reproduction please refer to physical product samples.

This brochure has been designed and printed in Australia.

Owned by Fairview



1800 007 175

www.fv.com.au

helpdesk@fv.com.au



FAIRVIEW™

DEFINING ARCHITECTURE SINCE 1988



AUSTRALIA
NEW ZEALAND
UNITED KINGDOM

SALES ENQUIRIES 1800 007 175

HELPDESK@FV.COM.AU

FV.COM.AU

VITRALOC / NOVEMBER 2023